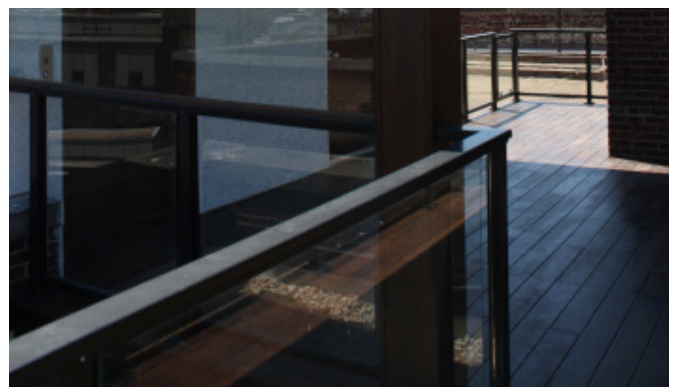
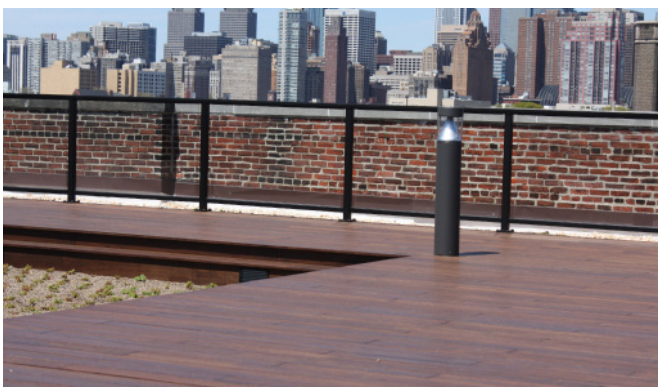


GREEN ROOF PHILADELPHIA | PENNSYLVANIA

PROJECT PROFILE



GREEN ROOF PHILADELPHIA

OUTSIDE BAMBOO DECKING

contractor **The Envision Group**
client **Alterra Property Group**

product **dasso.XTR Fused Bamboo**[®] Decking
quantity **4,500 sqft** date **2014**



The dasso Group, based in Hangzhou, China, has been the world's leader in innovative bamboo products for more than two decades. With 10 manufacturing facilities, over 1,000 employees, a Design and Research Center, and over 40 patents to date, dasso's mission is in to advance the innovative use of bamboo throughout the world.

RESIDENTIAL DECKING

PATENTED: CHINA, RUSSIA, AUSTRALIA, USA, EU, MALAYSIA, SINGAPORE

XTR-DK20-G0-PP	20 mm x 137 mm x 1829 mm 3/4+'' x 5-3/8+'' x 72''	1 Groove 2 Grooves	T&G	WOCA Oil
-----------------------	--	-----------------------	-----	----------

COMMERCIAL DECKING

XTR-DK40-G0-PP	40 mm x 137 mm x 1829 mm 1-1/2+'' x 5-3/8+'' x 72''	0 Grooves	T&G	WOCA Oil
-----------------------	--	-----------	-----	----------

TECHNICAL HIGHLIGHTS

- » Unsupported end-match Joint has a span rating of 100 psf.*
*Per ASTM D7032 over 16" framing
- » Class A fire rating per ASTM E84.
- » More dense than Ipe.¹

DESIGN FEATURES

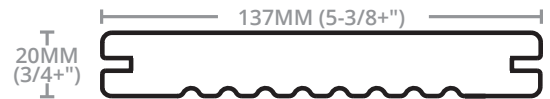
- » Only decking on the market with an end joint that can be installed off the joist.
- » Can stain to a variety of colors using our XTR Guard system.
- » The look and feel of a natural wood product. Performs like dense tropical hardwoods.
- » Offers the consistent quality of a manufactured composite product.

INSTALLATION BENEFITS

- » Available pre-primed for subsequent on-site topcoating.
- » Side-grooved for hidden fastening or can be face-screwed with screws exposed or plugged using dasso.XTR plugs.
- » Decking is 6' long and end-matched for installation on the joist (on 12"/18"/24" centers) or by coverage method off the joist on 16" centers.
- » Less time, less labor, less waste and easier installation.



SINGLE GROOVE PROFILE
XTR-DK20-G1-PF



DOUBLE GROOVE PROFILE
XTR-DK20-G2-PF



COMMERCIAL DECKING
XTR-DK40-G0-PP



END MATCH
All of our decking is end-matched for ease and improved quality of installation and to provide full coverage on or off the joist. Learn more at dassoXTR.com.

COMPARISON CHART SEE dassoXTR.com FOR ALL TECHNICAL SPECS.

Name	dasso.XTR	Ipe	Meranti Mahogany	Southern Yellow Pine	Western Red Cedar	WPC Premium
Density	1,100 kg/m ³	1,050 kg/m ³	730 kg/m ³	590 kg/m ³	410 kg/m ³	700 kg/m ³
Strength (psi)	20,100	25,400	12,700	14,200	7,500	1,420
Stiffness (1000psi)	2,103	3,140	1,612	1,510	930	175
Janka Hardness (lbs)	3,820	3,060	780	750	350	1,124
Insect & Decay Resistance	High	High	Low	Low	High (Heartwood only)	High

20 YEAR LIMITED WARRANTY

dasso.XTR products are manufactured using a patented process to ensure lasting outdoor beauty and enjoyment. Periodic recoating with XTR Guard is recommended to maintain its rich color. Please follow our maintenance instructions. Visit dassoXTR.com for copies of our installation and maintenance instructions and warranties.